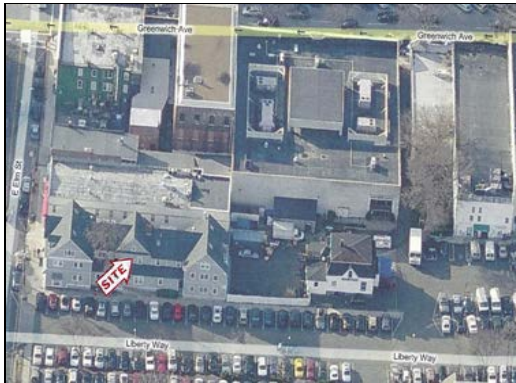


**AVAILABLE FOR LEASE
BOUTIQUE RETAIL SPACE**

19 EAST ELM STREET, GREENWICH, CT



High Profile Retail Space Adjacent to the Town's Largest Municipal Parking Lot



1,500 SQ. FT. OF RETAIL SPACE

Over 25' Feet of Store Frontage with Three Large Display Windows.

Tremendous Natural Light with 9' Ceilings.

Adjacent to Olivine Gabbra, Charles Schwab and Urban Outfitters (Opening across the Street).

Vanilla Box, Sprinklered, Handicap Accessible Space, Available Immediately.

\$45 per sq. ft. gross plus, electric.

Call: Matt Bernard, Exclusive Broker, For and Appointment to Inspect the Space.

