

**AVAILABLE FOR LEASE  
HIGH VISIBILITY GREENWICH RETAIL SPACE**

20 RAILROAD AVENUE, STORE #6, GREENWICH, CT  
(METRO-NORTH STATION RETAIL PLAZA)



**Former Omni Fitness Space**

- SIZE:** 2,200 Sq. Ft.
- RENT:** Upon Request
- FRONTAGE:** 25' (Ceiling Height 12')  
40' Railroad Lobby
- PARKING:** Gated Parking Lot for 38 Cars
- LOCATION:** Adjacent to Greenwich Train Sta.  
Entrance into Station Lobby
- OTHER:** Tenants include:  
Citibank, Planet Pizza  
Hopscotch Salon  
Greenwich Bank & Trust

For Further Details Contact: Matthew Bernard:  
(203) 273-2883 (mattrlc@aol.com)

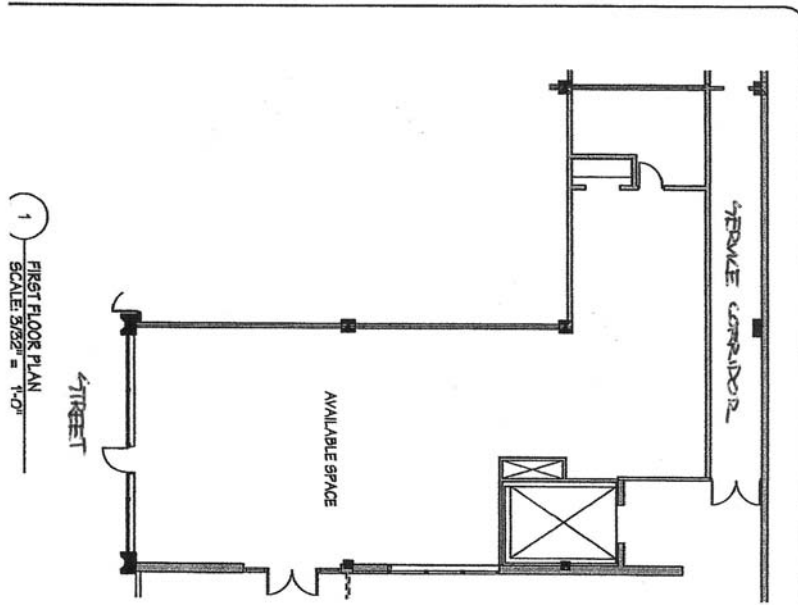


**The Retail Leasing Company**

Matthew L. Bernard  
71 Arch Street  
Greenwich, CT  
06830

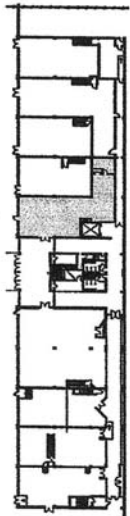
phone 203-622-1636  
fax 203-622-1981  
mobile 203-273-2883

1 FIRST FLOOR PLAN  
SCALE: 3/32" = 1'-0"



DIMENSIONS: APPROX %  
 STORE FRONT: 25'  
 INTERIOR WIDTH: 28'  
 INTERIOR DEPTH: 65'  
 REAR WIDTH: 40'  
 LOBBY FRONTAGE: 40'  
REAR BOX DIMENSIONS: (15' x 40')

2 KEY PLAN (FIRST FLOOR)  
SCALE: 1/64" = 1'-0"



**GREENWICH PLAZA RETAIL STORES**

AVAILABLE SPACE ON FIRST FLOOR  
 DATE: 8/17/09  
 SCALE: AS NOTED  
**A-2**

