

**The Shoppes at Forest Street
32 Forest Street
New Canaan, Connecticut**

HIGH PROFILE CORNER LOCATION AT THE INTERSECTION OF FOREST AND LOCUST STREET



Store B: 1,796 sq. ft.

Frontage: 63 ft. of street presence

Ceiling Heights: 15'4"-17'6"

Parking: On-site parking for 11 cars

Parcel Size: .25 Acres

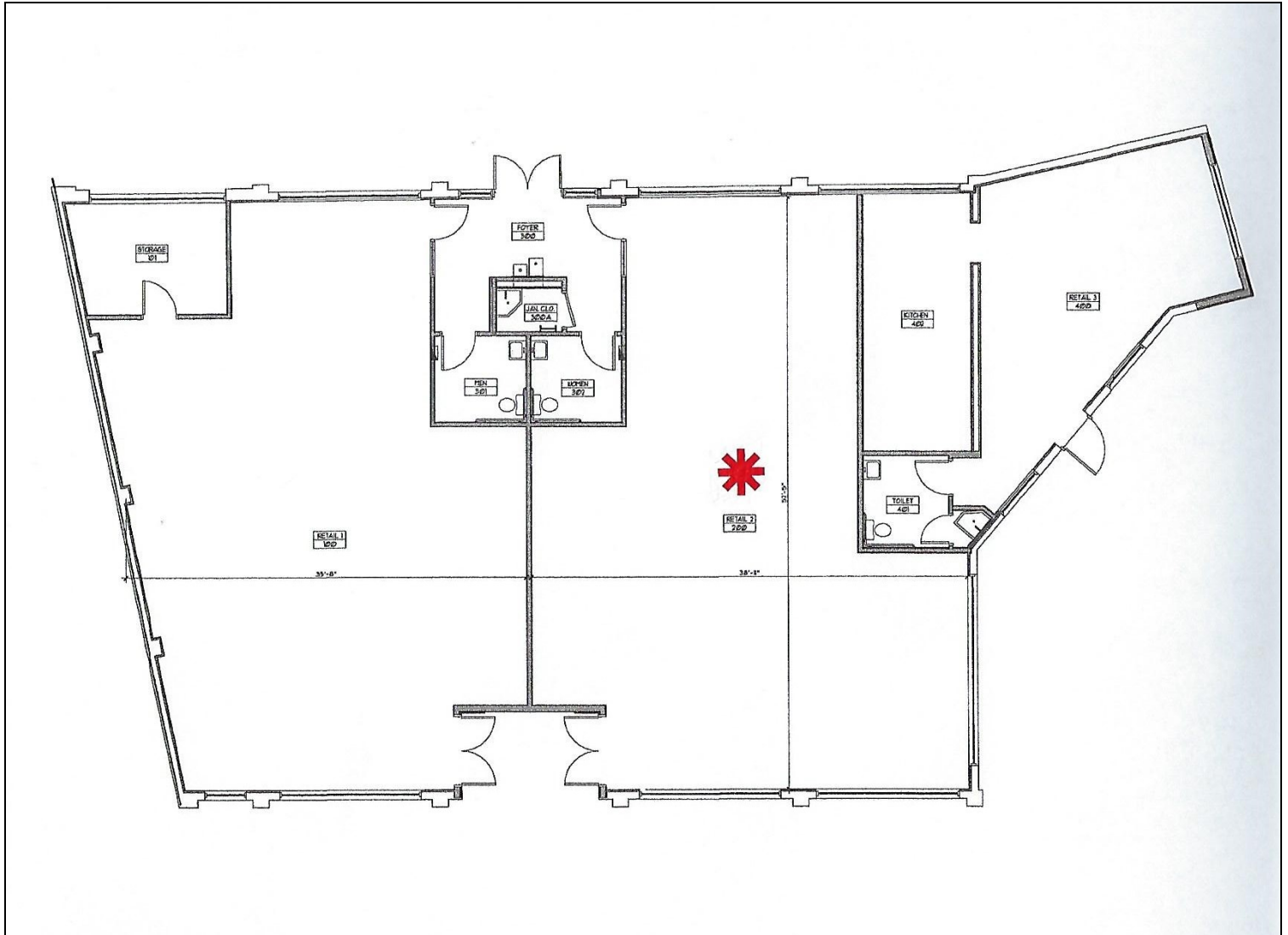
Zone: RETB

Other: Adjacent municipal parking lot

Price: \$39.50 per sq. ft., triple net

Possession: Immediate

Floor Plan



Forest Street

**Elevation Plans: 32 Forest Street
New Canaan, Connecticut**

FOREST STREET ELEVATION

