

NOW LEASING

The Shoppes at Forest Street
New Retail Development

32 Forest Street
New Canaan, Connecticut

HIGH PROFILE CORNER LOCATION AT THE INTERSECTION OF FOREST AND LOCUST STREET



The Shoppes at Forest Street: Leasing Details

Now Available Up To: 2,684 sq. ft.

Store #1: 1,994 sq. ft. **RENTED!**

Store #2: 1,796 sq. ft.

Store #3: 888 sq. ft. plus basement **RENTED!**

Ceiling Heights: 15'4\"-17'6\"

Parking: On-site parking for 10 cars

Parcel Size: .25 Acres

Zone: RETB

**Other: Major Intersection/Corner of Locust
Adjacent Municipal Parking Lot**

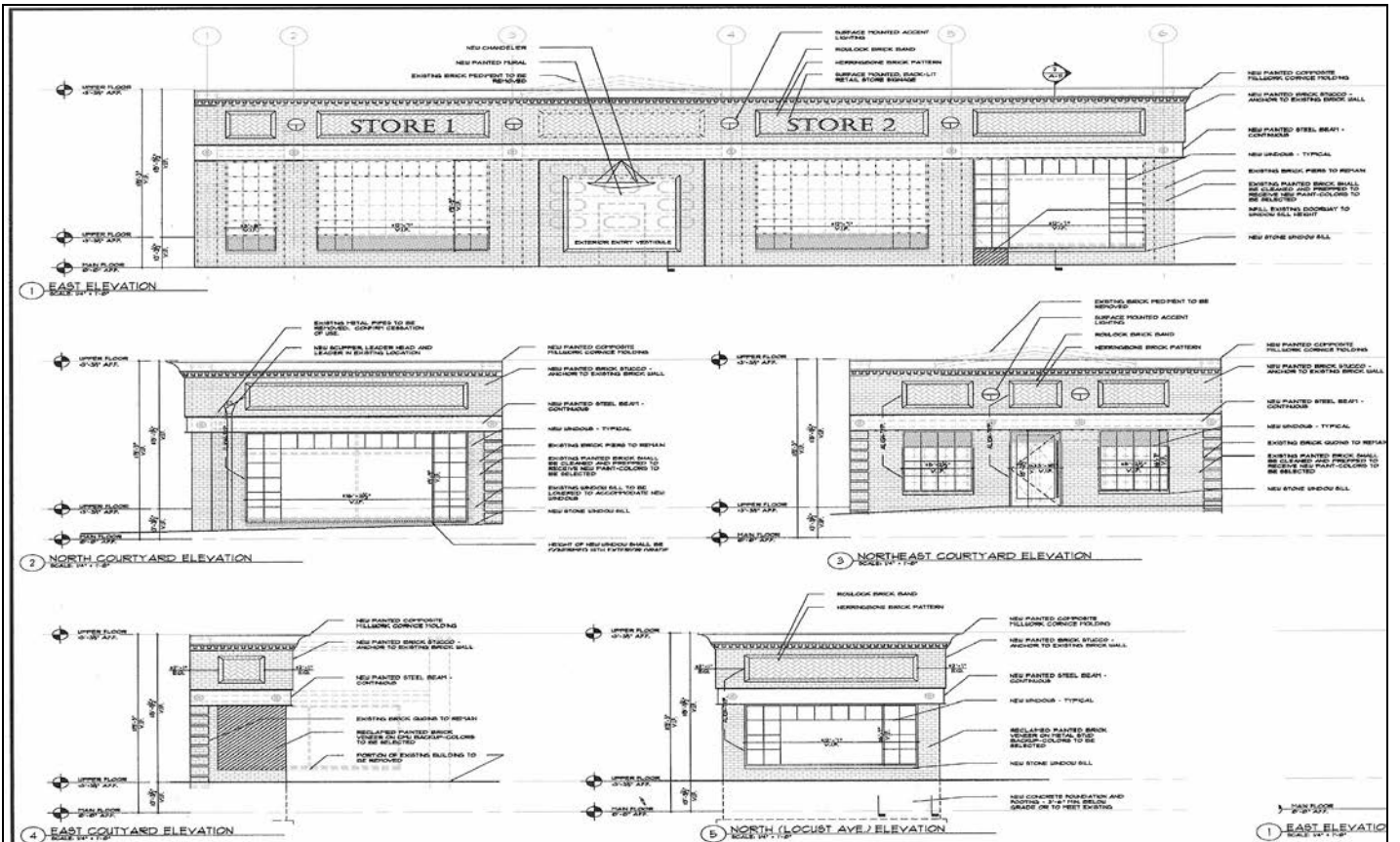
PRICE: Call for Details.

POSSESSION: FALL 2010

**Call Matt Bernard, Exclusive Broker
For Further Details: (203) 273-2883**

Elevation Plans: 32 Forest Street New Canaan, Connecticut

FOREST STREET ELEVATION



LOCUST STREET ELEVATIONS

New Storefront Under Construction



Forest Street Elevation



