

NOW LEASING

**428 West Putnam Avenue
U.S. Route #1
Greenwich, Connecticut**

HIGH PROFILE FREE-STANDING CORNER LOCATION AT THE INTERSECTION OF HAROLD AVENUE



Free-Standing Building Adjacent to Wendy's

**Parcel Size: .26 Acres
Building Size: 4,932 sq. ft.**

**Ground Floor: 2,950 sq. ft. Retail
Second Floor: 1,982 sq. ft. Retail or Office
Basement: 2,950 sq. ft. Storage**

60' Frontage on U.S. Route #1

Ceiling Heights: Up to 18' in Retail Space

**Parking: On-site parking for 21 cars
Parcel Size: .25 Acres
Zone: LBR-2 (Local Business Retail)
Traffic Count: 17,260 cars per day**

PRICE: Call for Details.

POSSESSION: Spring 2022

**Call Matt Bernard, Exclusive Broker
For Further Details: (203) 273-2883**

428 West Putnam Ave.

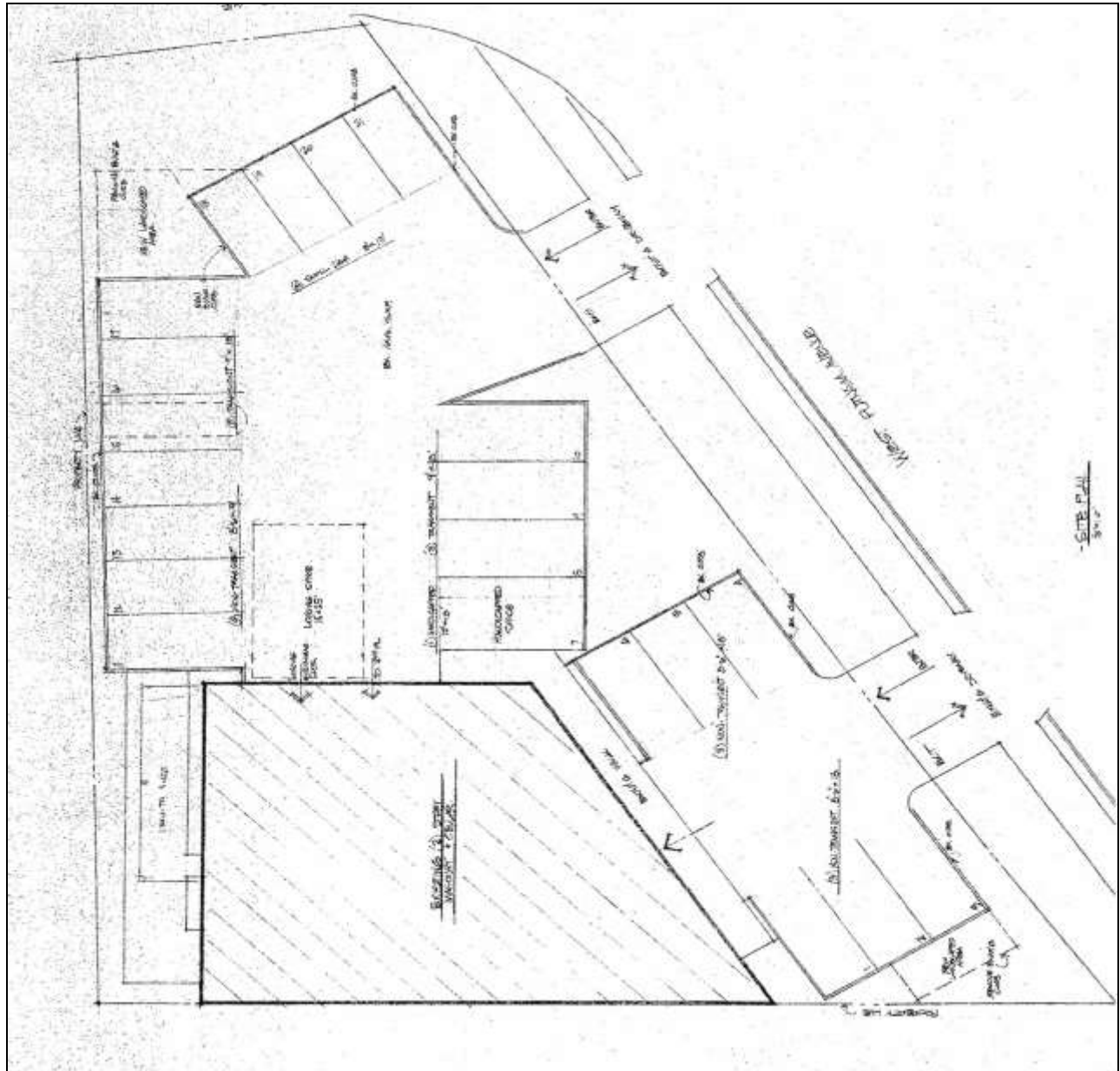
Ground Floor Entrance: Double Height Interior View



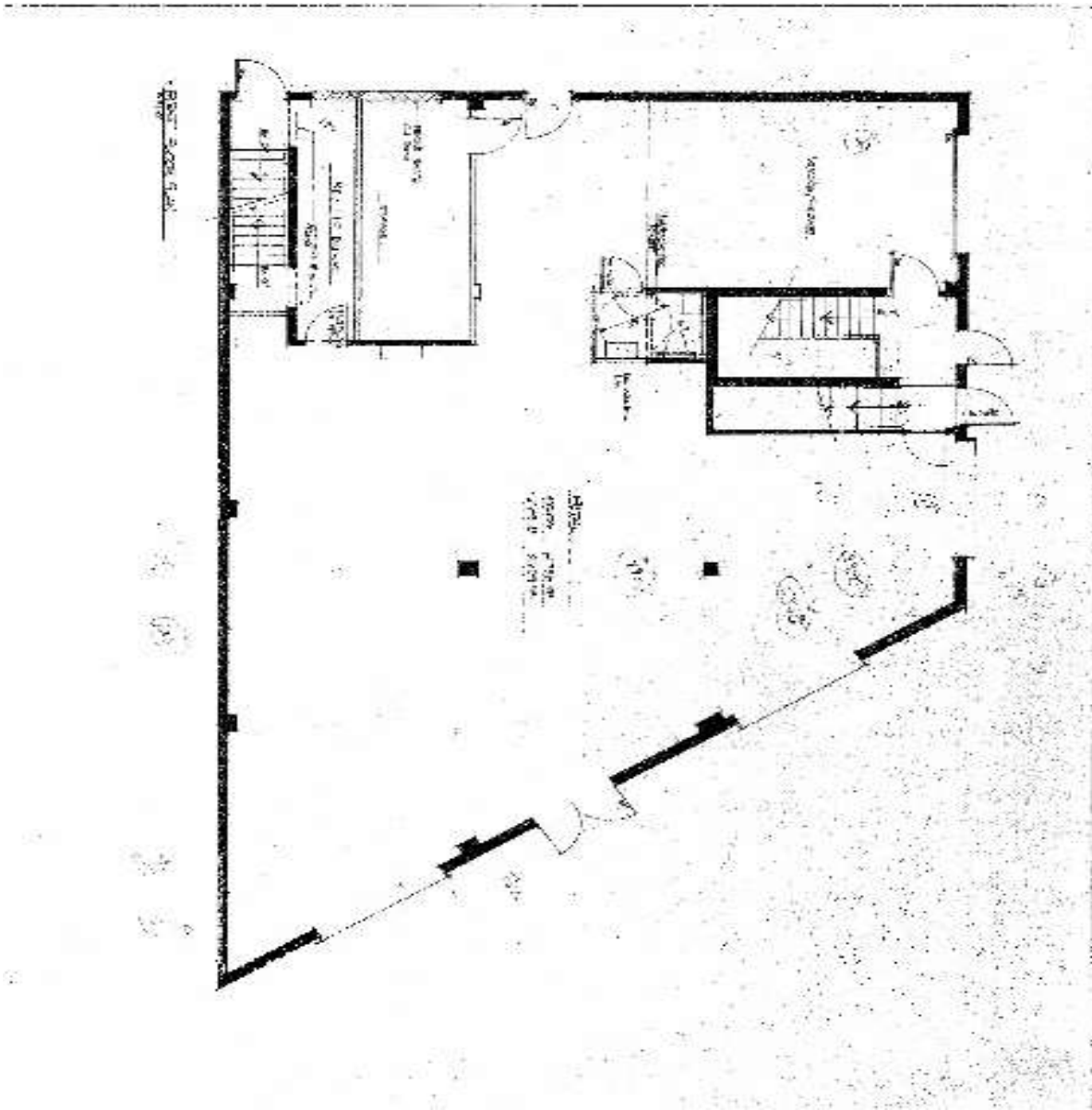
Second Floor View



Plot Plan
428 West Putnam Avenue, Greenwich, CT



**428 West Putnam Avenue, Greenwich, CT
Ground Floor Plan**



Site Map

